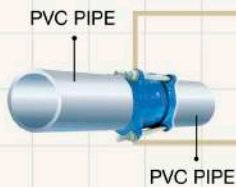


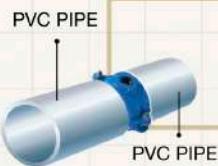
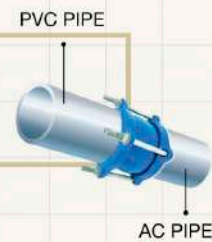
# DETACHABLE JOINT & VARIABLE ADAPTOR & FERROUS SADDLE



**DETACHABLE JOINT**  
D.J.-FOR UPVC PIPE



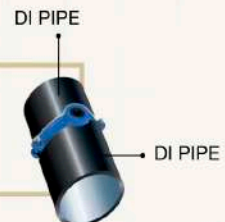
**VARIABLE ADAPTOR**  
V.A.-FOR UPVC TO AC PIPE



**FERROUS SADDLE**  
(FOR PVC PIPE)



**FERROUS SADDLE**  
(FOR AC OR DI PIPE)

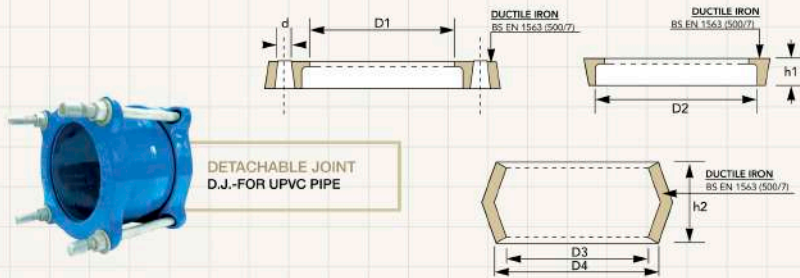


LYE MANUFACTURING SDN. BHD. (32836-H)  
Manufacturer of Valves, Hydrants, Joints, Fittings & Manhole Covers.



## JOINTS & SADDLES

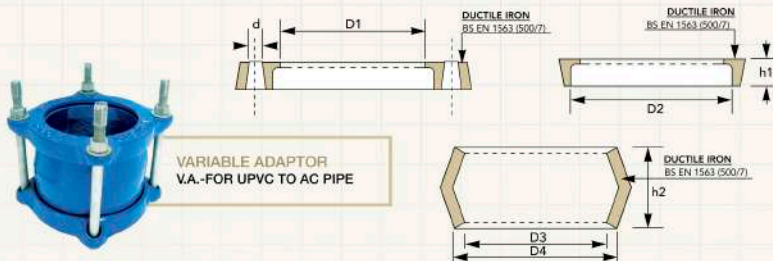
### DETACHABLE JOINT & VARIABLE ADAPTOR



DETACHABLE JOINT  
D.J.-FOR UPVC PIPE

#### DUCTILE IRON (S.G.) DETACHABLE JOINT (D.J.)

Nominal Size	UPVC Pipe		Flange			Sleeve			No. of Bolts	Dia. of Bolts
	O.D.	D1	D2	d	h1	D3	D4	h2		
80	89.1	93 ± 1	109 ± 1	14 ± 1	28 ± 1	93 ± 1	104 ± 1	100 ± 1	4	12
100	114.5	117 ± 1	134 ± 1	14 ± 1	31 ± 1	117 ± 1	129 ± 1	110 ± 1	4	12
150	168.5	173 ± 1	192 ± 1	14 ± 1	32 ± 1	173 ± 1	186 ± 1	130 ± 1	4	12
200	219.4	224 ± 2	245 ± 2	18 ± 2	36 ± 2	224 ± 2	239 ± 2	150 ± 2	4	16
250	273.4	278 ± 2	300 ± 2	18 ± 2	41 ± 2	278 ± 2	294 ± 2	165 ± 2	4	16
300	324.3	329 ± 2	353 ± 2	18 ± 2	42 ± 2	329 ± 2	346 ± 2	170 ± 2	5	16



VARIABLE ADAPTOR  
V.A.-FOR UPVC TO AC PIPE

#### DUCTILE IRON (S.G.) VARIABLE ADAPTOR (V.A.) (TYPE D)

Nominal Size	AC Pipe		Flange			Sleeve			No. of Bolts	Dia. of Bolts
	O.D.	D1	D2	d	h1	D3	D4	h2		
80	95.6	100 ± 1	117 ± 1	14 ± 1	22 ± 1	100 ± 1	112 ± 1	100 ± 1	4	12
100	121.9	127 ± 2	145 ± 2	14 ± 1	28 ± 1	127 ± 1	140 ± 1	110 ± 1	4	12
150	177.3	182 ± 1	208 ± 1	14 ± 1	28 ± 1	182 ± 1	196 ± 1	130 ± 1	4	12
200	232.2	238 ± 2	260 ± 2	18 ± 2	32 ± 2	238 ± 2	254 ± 2	150 ± 2	4	16
250	286.0	291 ± 2	314 ± 2	18 ± 2	32 ± 2	291 ± 2	308 ± 2	165 ± 2	4	16
300	345.4	352 ± 2	376 ± 2	18 ± 2	40 ± 2	352 ± 2	370 ± 2	170 ± 2	5	16

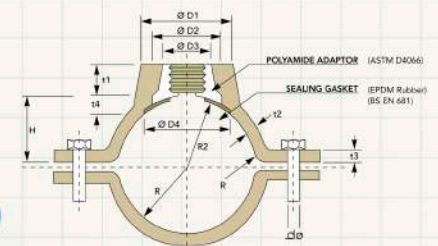
## JOINTS & SADDLES

### FERROUS SADDLE



FERROUS SADDLE  
(FOR PVC PIPE)

FERROUS SADDLE  
(FOR AC OR DI PIPE)



#### DUCTILE IRON (S.G.) FERROUS SADDLE (FOR PVC PIPE)

Nominal Size DN	Dimensions of Type B					Ductile Iron (Sg.) Saddle (D1)									
	R	R2	Bolt			D1	D2	D3	D4	t1	t2	t3	t4	H	
			Hole.d	Size X Length	No.										Min. Value
80	47	53	16	M12 x 76	2	72	52	44	65	16	6	8	6	38	
100	60	53	16	M12 x 76	2	72	52	44	65	16	6	10	6	48	
150	86	94	16	M12 x 76	2	72	52	44	65	16	7	11	8	68	
200	112	94	16	M12 x 76	2	72	52	44	65	18	7	12	8	96	
250	140	94	16	M12 x 76	2	72	52	44	65	19	7	12	8	122	
300	165.5	94	16	M12 x 76	2	72	52	44	65	22	7	12	8	150	

#### DUCTILE IRON (S.G.) FERROUS SADDLE (FOR AC / DI PIPE)

Nominal Size DN	Dimensions of Type A					Ductile Iron (Sg.) Saddle (D1)									
	R	R2	Bolt			D1	D2	D3	D4	t1	t2	t3	t4	H	
			Hole.d	Size X Length	No.										Min. Value
80	49	53	15	M12 x 76	2	72	52	44	65	11	4	12	6	40	
100	63	53	15	M12 x 76	2	72	52	44	65	11	4.5	13	7	48	
150	90	94	18	M12 x 76	2	72	52	44	65	11	5	13	7	68	
200	118	94	18	M12 x 76	2	72	52	44	65	11	5	14	7	96	
250	145	94	18	M12 x 76	2	72	52	44	65	11	5.5	14	8	122	
300	175	94	18	M12 x 76	2	72	52	44	65	11	5.5	14	8	150	

Please Note: Technical data provided is indicative only and may be subject to change without notice



LYE MANUFACTURING SDN. BHD. 02836-10  
Manufacturer of Valves, Hydrants, Joints, Fittings & Manhole Covers.



LYE MANUFACTURING SDN. BHD. 02836-10  
Manufacturer of Valves, Hydrants, Joints, Fittings & Manhole Covers.

