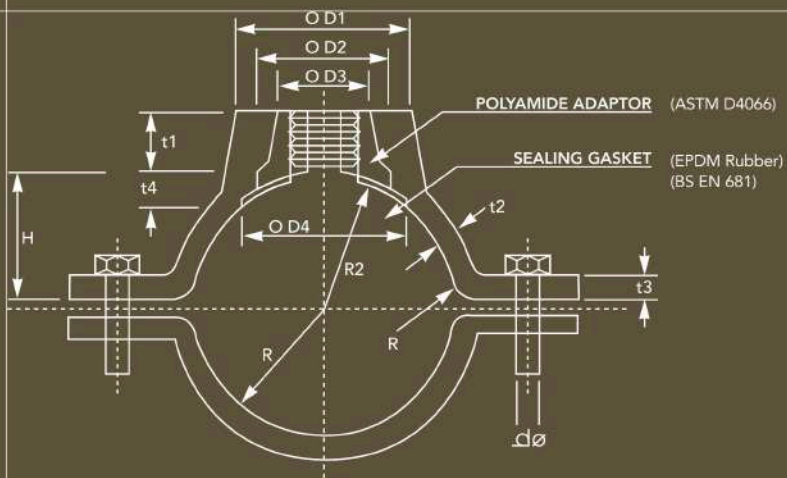
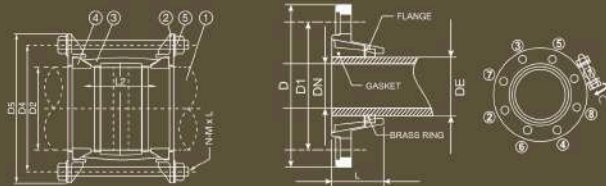
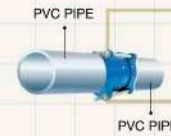


JOINTS & SADDLES



JOINTS & SADDLES

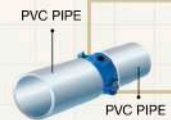
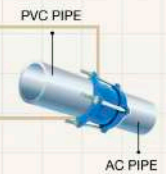
DETACHABLE JOINT & VARIABLE ADAPTOR & FERROUS SADDLE



DETACHABLE JOINT
D.J.-FOR UPVC PIPE



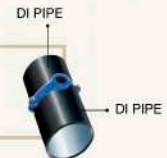
VARIABLE ADAPTOR
V.A.-FOR UPVC TO AC PIPE



FERROUS SADDLE
(FOR PVC PIPE)



FERROUS SADDLE
(FOR AC OR DI PIPE)

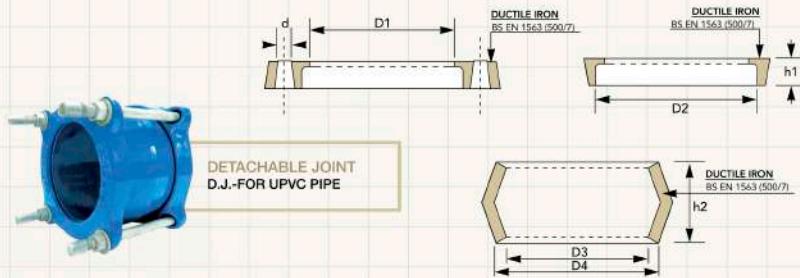


LYE MANUFACTURING SDN. BHD. 02836410
Manufacturer of Valves, Hydrants, Joints, Fittings & Manhole Covers.



JOINTS & SADDLES

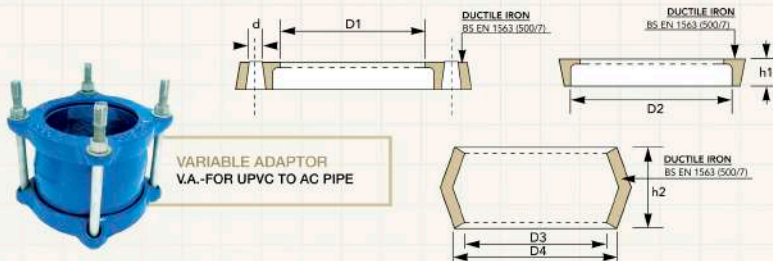
DETACHABLE JOINT & VARIABLE ADAPTOR



DETACHABLE JOINT
D.J.-FOR UPVC PIPE

DUCTILE IRON (S.G.) DETACHABLE JOINT (D.J.)

Nominal Size	UPVC Pipe		Flange			Sleeve			No. of Bolts	Dia. of Bolts
	O.D.	D1	D2	d	h1	D3	D4	h2		
80	89.1	93 ± 1	109 ± 1	14 ± 1	28 ± 1	93 ± 1	104 ± 1	100 ± 1	4	12
100	114.5	117 ± 1	134 ± 1	14 ± 1	31 ± 1	117 ± 1	129 ± 1	110 ± 1	4	12
150	168.5	173 ± 1	192 ± 1	14 ± 1	32 ± 1	173 ± 1	186 ± 1	130 ± 1	4	12
200	219.4	224 ± 2	245 ± 2	18 ± 2	36 ± 2	224 ± 2	239 ± 2	150 ± 2	4	16
250	273.4	278 ± 2	300 ± 2	18 ± 2	41 ± 2	278 ± 2	294 ± 2	165 ± 2	4	16
300	324.3	329 ± 2	353 ± 2	18 ± 2	42 ± 2	329 ± 2	346 ± 2	170 ± 2	5	16



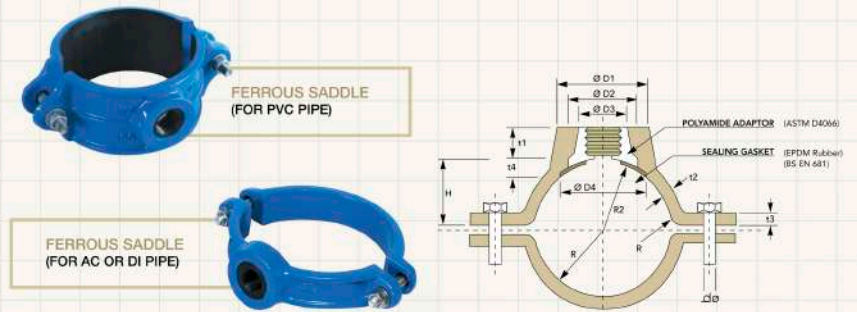
VARIABLE ADAPTOR
V.A.-FOR UPVC TO AC PIPE

DUCTILE IRON (S.G.) VARIABLE ADAPTOR (V.A.) (TYPE D)

Nominal Size	AC Pipe		Flange			Sleeve			No. of Bolts	Dia. of Bolts
	O.D.	D1	D2	d	h1	D3	D4	h2		
80	95.6	100 ± 1	117 ± 1	14 ± 1	22 ± 1	100 ± 1	112 ± 1	100 ± 1	4	12
100	121.9	127 ± 2	145 ± 2	14 ± 1	28 ± 1	127 ± 1	140 ± 1	110 ± 1	4	12
150	177.3	182 ± 1	208 ± 1	14 ± 1	28 ± 1	182 ± 1	196 ± 1	130 ± 1	4	12
200	232.2	238 ± 2	260 ± 2	18 ± 2	32 ± 2	238 ± 2	254 ± 2	150 ± 2	4	16
250	286.0	291 ± 2	314 ± 2	18 ± 2	32 ± 2	291 ± 2	308 ± 2	165 ± 2	4	16
300	345.4	352 ± 2	376 ± 2	18 ± 2	40 ± 2	352 ± 2	370 ± 2	170 ± 2	5	16

JOINTS & SADDLES

FERROUS SADDLE



DUCTILE IRON (S.G.) FERROUS SADDLE (FOR PVC PIPE)

Nominal Size DN	Dimensions of Type B					Ductile Iron (Sg.) Saddle (D1)									
	R	R2	Bolt			D1	D2	D3	D4	t1	t2	t3	t4	H	
			Hole.d	Size X Length	No.										Min. Value
80	47	53	16	M12 x 76	2	72	52	44	65	16	6	8	6	38	
100	60	53	16	M12 x 76	2	72	52	44	65	16	6	10	6	48	
150	86	94	16	M12 x 76	2	72	52	44	65	16	7	11	8	68	
200	112	94	16	M12 x 76	2	72	52	44	65	18	7	12	8	96	
250	140	94	16	M12 x 76	2	72	52	44	65	19	7	12	8	122	
300	165.5	94	16	M12 x 76	2	72	52	44	65	22	7	12	8	150	

DUCTILE IRON (S.G.) FERROUS SADDLE (FOR AC / DI PIPE)

Nominal Size DN	Dimensions of Type A					Ductile Iron (Sg.) Saddle (D1)									
	R	R2	Bolt			D1	D2	D3	D4	t1	t2	t3	t4	H	
			Hole.d	Size X Length	No.										Min. Value
80	49	53	15	M12 x 76	2	72	52	44	65	11	4	12	6	40	
100	63	53	15	M12 x 76	2	72	52	44	65	11	4.5	13	7	48	
150	90	94	18	M12 x 76	2	72	52	44	65	11	5	13	7	68	
200	118	94	18	M12 x 76	2	72	52	44	65	11	5	14	7	96	
250	145	94	18	M12 x 76	2	72	52	44	65	11	5.5	14	8	122	
300	175	94	18	M12 x 76	2	72	52	44	65	11	5.5	14	8	150	

Please Note: Technical data provided is indicative only and may be subject to change without notice



LYE MANUFACTURING SDN. BHD. 02836-10
Manufacturer of Valves, Hydrants, Joints, Fittings & Manhole Covers.



LYE MANUFACTURING SDN. BHD. 02836-10
Manufacturer of Valves, Hydrants, Joints, Fittings & Manhole Covers.



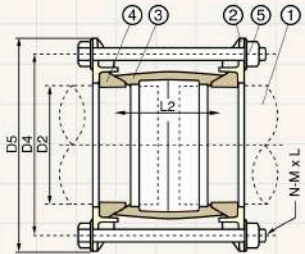
JOINTS & SADDLES

MECHANICAL JOINT FOR DI PIPE

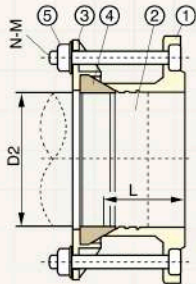
COUPLING & FLANGE ADAPTOR



MECHANICAL COUPLING



No.	Component
1	Pipe
2	Gland
3	Sleeve
4	Rubber Gasket
5	Bolt and Nut



No.	Component
1	Sleeve
2	Pipe
3	Gland
4	Rubber Gasket
5	Stud Bolt



MECHANICAL FLANGE ADAPTOR

JOINTS & SADDLES

MECHANICAL JOINT FOR DI PIPE | COUPLING & FLANGE ADAPTOR

No.	Component	Material	Standard Ref.
1	Bolt & Nut	Hot Dipped Galvanized	BS 4190
2	Sleeve	Ductile Iron (EN-GJS-500-7)	BS EN 1563
3	Gland	Ductile Iron (EN-GJS-500-7)	BS EN 1563
4	Rubber Gasket	EPDM	BS EN 681
5	Coating	Fusion Bonded Epoxy	-

MECHANICAL COUPLING

Dimension in mm

DN	D2	D4	D5	L2	M	N	L
80	98	158	188	100	1/2"	4	175
100	118	182	212	100	1/2"	4	175
150	170	237	267	100	1/2"	4	175
200	222	292	322	100	1/2"	4	175
250	274	345	375	100	1/2"	6	175
300	326	396	426	100	1/2"	6	175
350	378	460	498	150	5/8"	8	230
400	429	515	553	150	5/8"	8	230
450	480	565	603	150	5/8"	10	230
500	532	620	658	150	5/8"	10	230
600	635	725	763	150	5/8"	10	230
700	738	840	878	150	5/8"	12	230
800	842	950	988	150	5/8"	12	230

MECHANICAL FLANGE ADAPTOR

Dimension in mm

DN	D2	n	M	L	Flange Standard
80	98	4	1/2"	70	PN10+PN16 + TABLE E
100	118	4	1/2"	70	PN10+PN16 + TABLE E
150	170	4	1/2"	75	PN10+PN16 + TABLE E
200	222	4	1/2"	75	PN10+PN16 + TABLE E
250	274	6	1/2"	90	PN10+PN16 + TABLE E
300	326	6	1/2"	90	PN10+PN16 + TABLE E
350	378	8	1/2"	100	PN16
400	429	8	1/2"	100	PN16
450	480	10	1/2"	100	PN16
500	532	10	1/2"	100	PN16
600	635	10	1/2"	100	PN16
700	738	12	1/2"	100	PN16
800	842	12	1/2"	100	PN16

Please Note: Technical data provided is indicative only and may be subject to change without notice



LVE MANUFACTURING SDN. BHD. 02836-10
 Manufacturer of Valves, Hydrants, Joints, Fittings & Manhole Covers.



LVE MANUFACTURING SDN. BHD. 02836-10
 Manufacturer of Valves, Hydrants, Joints, Fittings & Manhole Covers.



JOINTS & SADDLES

UNIVERSAL JOINT

STRAIGHT COUPLING & FLANGE ADAPTOR



STRAIGHT COUPLING

Brand	LYE
Sizes Available	80mm - 300mm
Material	Ductile Iron (S.G.)
Max. Working Pressure	16 Bars
Setting Gap	20mm - 30mm
Angular Deflection	6 Degrees
Bolts and Nuts	Hot-Dip Galvanized
Coating	Epoxy (Blue)
Rubber Gasket	EPDM Rubber

Normal Diameter	Normal Diameter Range (mm)	Type of Pipes
3" / 80mm	89 - 99	uPVC, DI, CI, AC, Steel
4" / 100mm	114 - 126	uPVC, DI, CI, AC, Steel
6" / 150mm	168 - 179	uPVC, DI, CI, AC, Steel
8" / 200mm	219 - 234	uPVC, DI, CI, AC, Steel
10" / 250mm	273 - 286	uPVC, DI, CI, AC, Steel
12" / 300mm	324 - 334	uPVC, DI, CI, AC, Steel

Brand	LYE
Sizes Available	80mm - 300mm
Material	Ductile Iron (S.G.)
Max. Working Pressure	16 Bars
Setting Gap	10mm - 35mm
Angular Deflection	6 Degrees
Bolts and Nuts	Hot-Dip Galvanized
Coating	Epoxy (Blue)
Rubber Gasket	EPDM Rubber

Normal Diameter	Normal Diameter Range (mm)	Type of Pipes
3" / 80mm	89 - 99	uPVC, DI, CI, AC, Steel
4" / 100mm	114 - 126	uPVC, DI, CI, AC, Steel
6" / 150mm	168 - 179	uPVC, DI, CI, AC, Steel
8" / 200mm	219 - 234	uPVC, DI, CI, AC, Steel
10" / 250mm	273 - 286	uPVC, DI, CI, AC, Steel
12" / 300mm	324 - 334	uPVC, DI, CI, AC, Steel

Please Note: Technical data provided is indicative only and may be subject to change without notice



FLANGE ADAPTOR

JOINTS & SADDLES

POLY RESTRAINT JOINT



LYE POLY RESTRAINT COUPLING
MODEL NO. : LYE 785



LYE POLY RESTRAINT FLANGE ADAPTOR
MODEL NO. : LYE 786

The LYE Poly Restraint Couplings and Flange Adaptors, designed specifically for use on Polyethylene pipes, is a self-anchoring unit mechanically fitted to pipe ends. Applicable in all environments, these LYE Poly Restraint Joints is another product to enhance piping systems.

FEATURES & BENEFITS

Full range available DN 63 - DN 315

- Couplings and flange adaptors are available.
- Full pressure rating. (up to 16 Bars)

Easy to fit

- No special tools required for installation.
- All weather installation, even under water.

Outstanding protection from corrosion

- The LYE Poly Restraint Couplings and Flange Adaptors are coated in Fusion Bonded Epoxy (FBE) which makes it well equipped to withstand any storage, site and corrosion damage.

Please Note: Technical data provided is indicative only and may be subject to change without notice



LYE MANUFACTURING SDN. BHD. 02836-10
Manufacturer of Valves, Hydrants, Joints, Fittings & Manhole Covers.

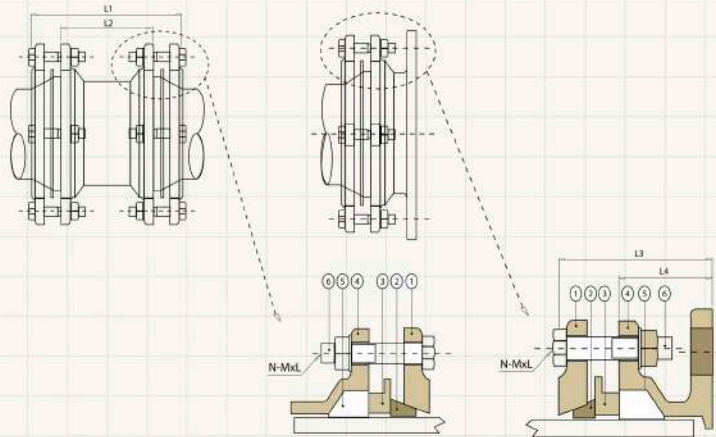


LYE MANUFACTURING SDN. BHD. 02836-10
Manufacturer of Valves, Hydrants, Joints, Fittings & Manhole Covers.



JOINTS & SADDLES

POLY RESTRAINT JOINT



MATERIAL FOR MAIN PARTS

No.	Component	Material	Grade
1	End Ring	Ductile Iron	500/7
2	Grip Ring	Stainless Steel/Brass	304S31
3	Intermediate Ring	Ductile Iron	500/7
4	Body	Ductile Iron	500/7
5	Gasket	Rubber	EPDM
6	Bolts & Nuts	Galvanized Steel	A3

OVERALL DIMENSIONS FOR LYE POLY RESTRAINT COUPLINGS & FLANGE ADAPTORS

LYE Poly Restraint Couplings			LYE Poly Restraint Flange Adaptors			Flange Information				
DN	L1 (mm)	L2 (mm)	DN	L3 (mm)	L4 (mm)	DN	PN10/16	BS10/D	BS10/E	ANSI/150
63	232	130	63	116	65	80	*			*
90	242	140	90	121	70	80	*			*
110	250	146	110	125	73	100	*	*	*	*
125	254	150	125	162	110	100	*	*	*	*
160	294	174	160	150	90	150	*		*	*
180	300	180	180	185	125	150	*		*	*
225	321	200	225	185	125	200	*	*	*	*
250	338	200	250	199	130	250	*		*	*
280	338	200	280	209	140	250	*		*	*
315	348	210	315	219	150	300	*		*	*

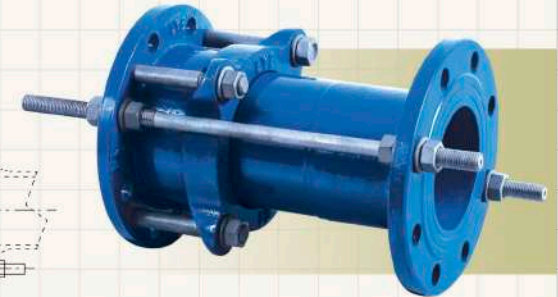
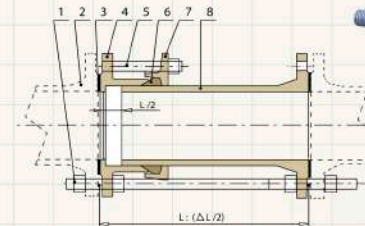


LYE MANUFACTURING SDN. BHD. 02836-10
 Manufacturer of Valves, Hydrants, Joints, Fittings & Manhole Covers.



JOINTS & SADDLES

FLANGED DISMANTLING JOINT



The LYE Flanged Dismantling Joint is a double-flanged fitting that allows longitudinal adjustment in flanged pipe systems.

When fitting valves and equipment there is often a problem bridging the gap between two mating flanges. This system gives an axial movement to accommodate such a problem. It provides adjustability to your equipment installations by combining a Flanged Coupling Adaptor and a Flanged Spigot into one assembly. Longitudinal adjustment is provided by the telescoping action of the Spigot inside the Flanged Coupling Adaptor. When final installation position is achieved, the bolting procedure for the Flanged Coupling Adaptor and the Flanged Spigot can be completed.

FEATURES & BENEFITS

Full range available DN80 - DN600
 • For application where a full-face flange is required i.e. wafer type valves, the flange of the spigot piece provides a full flange sealing area.

LONGITUDINAL ADJUSTMENT

- Accommodates up to 50mm/2" longitudinal adjustment.
- Can be locked at required length with tie bars supplied.
- Allows for fast and simple maintenance of valves and pumps.
- No need for complex anchoring systems.

OUTSTANDING PROTECTION FROM CORROSION

- The LYE Flanged Dismantling Joint is coated in Fusion Bonded Epoxy (FBE) which makes it well equipped to withstand any storage, site and corrosion damage.

MATERIALS FOR MAIN PARTS

No.	Component	Material	Grade
1	Bolts & Nuts	Galvanized Steel	A3
2	Flange	-	-
3	Rubber Seal	Rubber	EPDM
4	Flange Adaptor	Ductile Iron	500 / 7
5	Bolts & Nuts	Galvanized Steel	A3
6	Rubber Ring	Rubber	EPDM
7	Gland	Ductile Iron	500 / 7
8	Flange Spigot	Ductile Iron	500 / 7

OVERALL DIMENSIONS FOR LYE FLANGED DISMANTLING JOINT

DN	Length (mm)	L-Adjust Length (mm)	Flange Standard	OD
80	300	50	PN16	98
100	300	50	PN16	118
150	450	50	PN16	170
200	600	50	PN16	222
250	600	50	PN16	274
300	600	50	PN16	326
350	600	50	PN16	378
400	600	50	PN16	429
450	600	50	PN16	480
500	600	50	PN16	532
600	600	50	PN16	635

Please Note: Technical data provided is indicative only and may be subject to change without notice

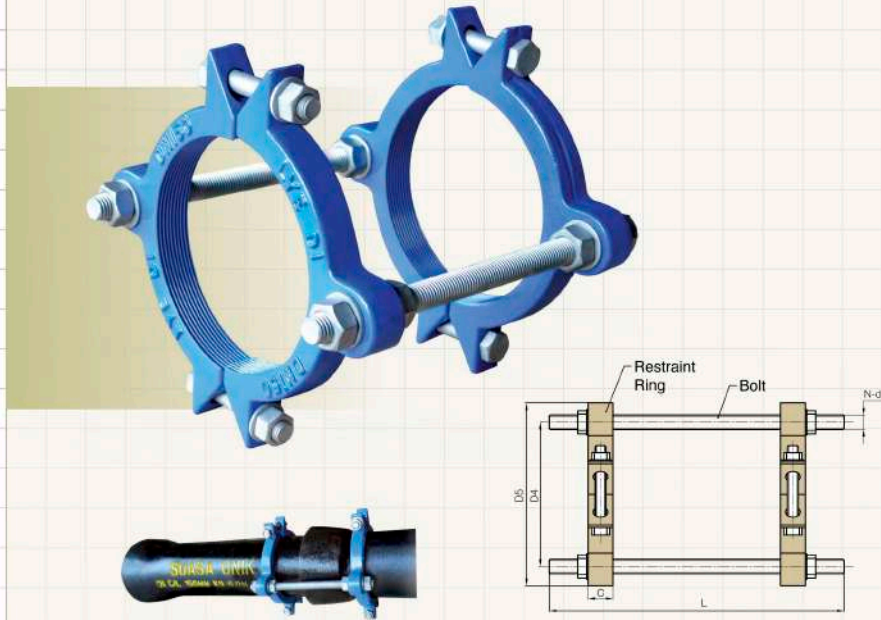


LYE MANUFACTURING SDN. BHD. 02836-10
 Manufacturer of Valves, Hydrants, Joints, Fittings & Manhole Covers.



JOINTS & SADDLES

PUSH-ON JOINT RESTRAINT HARNESS



THE LYE PUSH-ON JOINT RESTRAINT HARNESS IS DESIGNED FOR RESTRAINING OF SOCKET PUSH-ON JOINTS OF DUCTILE IRON PIPELINES.

DN	D4	D5	C	N-d	L
80	161	204	28	2-M16	280
100	184	227	28	2-M16	290
150	240	291	28	2-M20	310
200	301	352	28	2-M20	320
250	360	412	30	4-M20	330
300	417	469	32	4-M20	345

Please Note: Technical data provided is indicative only and may be subject to change without notice

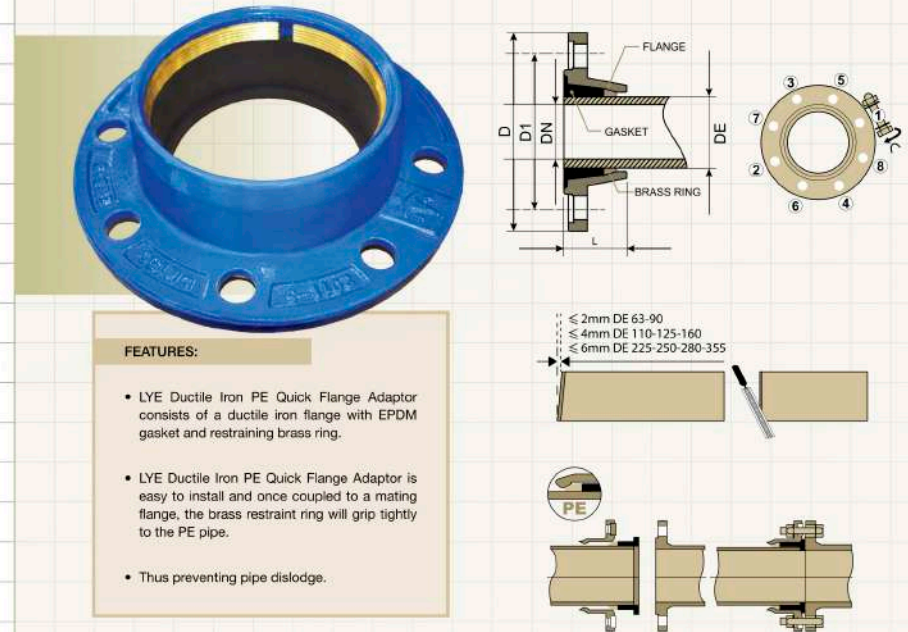


LYE MANUFACTURING SDN. BHD. 02836-10
 Manufacturer of Valves, Hydrants, Joints, Fittings & Manhole Covers.



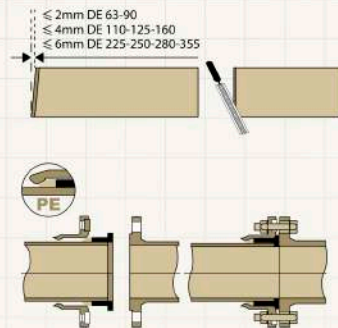
JOINTS & SADDLES

PE QUICK FLANGE ADAPTOR



FEATURES:

- LYE Ductile Iron PE Quick Flange Adaptor consists of a ductile iron flange with EPDM gasket and restraining brass ring.
- LYE Ductile Iron PE Quick Flange Adaptor is easy to install and once coupled to a mating flange, the brass restraint ring will grip tightly to the PE pipe.
- Thus preventing pipe dislodge.



DN	DE	D		L	D1		n-d	
		PN 10	PN 16		PN 10	PN 16	PN 10	PN 16
DN 60/65	63	185	185	53	135/145	135/145	4"19	4"19
DN 80	90	200	200	61	160	160	8"19	8"19
DN 100	110	220	220	67	180	180	8"19	8"19
DN 125	125	250	250	70	210	210	8"19	8"19
DN 150	180	285	285	79	240	240	8"23	8"23
DN 200	200	340	340	91	295	295	8"23	12"23
DN 200	225	340	340	91	295	295	8"23	12"23
DN 250	250	400	400	95	350	355	12"23	12"28
DN 250	280	400	400	95	350	355	12"23	12"28
DN 300	315	455	455	105	400	410	12"23	12"28
DN 300	355	455	455	105	400	410	12"23	12"28

Please Note: Technical data provided is indicative only and may be subject to change without notice



LYE MANUFACTURING SDN. BHD. 02836-10
 Manufacturer of Valves, Hydrants, Joints, Fittings & Manhole Covers.



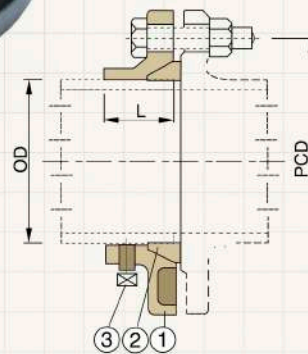
JOINTS & SADDLES

UNI-FLANGE



FEATURES:

- LYE Ductile Iron Uni-Flange Adaptor is ideal on ductile iron and mild steel pipe where retro-fitting at job site is required.
- Pipe flanging can be easily fabricated on site using plain end pipe without the need of any special tools and the flange restraint is provided by means of a set screw locking device.
- Uses EPDM wedge-rubber gasket for seal.
- Bolt hole drilling is to BS EN 1092-2 PN 16.
- Can be used for above or below ground application.
- Can be disassembled for maintenance if required.



No.	Component	Material
1	Adaptor	Ductile Iron
2	Rubber Ring	EPDM
3	Set Bolts	Steel with Hot Dipped Galvanized

DN	Pipe OD		L
	DI Pipe	Steel Pipe	
80	98	88.9	50
100	118	114.3	50
150	170	168.3	50
200	222	219.1	59
250	274	273	61
300	326	323.9	63
350	378	-	65
400	429	-	67

Please Note: Technical data provided is indicative only and may be subject to change without notice



LYE MANUFACTURING SDN. BHD. 02836-10
 Manufacturer of Valves, Hydrants, Joints, Fittings & Manhole Covers.



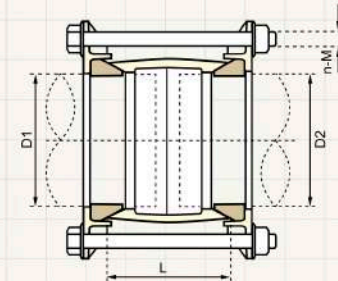
LYE MANUFACTURING SDN. BHD. 02836-10
 Manufacturer of Valves, Hydrants, Joints, Fittings & Manhole Covers.



JOINTS & SADDLES

STEPPED COUPLING

FOR PVC-O TO MS PIPE



PVC-O-MS COUPLING
 DN80-DN300

DN	Stepped Coupling				
	D1 for PVC-O Pipe	D2 for MS Pipe	L	n	M
DN80	90.0	88.9	100 ±1	4	M12
DN100	110.0	114.3	110 ±1	4	M12
DN150	160.0	168.3	130 ±1	4	M12
DN200	200.0	219.1	150 ±2	4	M16
DN250	250.0	273.0	165 ±2	4	M16
DN300	315.0	323.9	170 ±2	5	M16