

FLEXIBLE

# MECHANICAL JOINTS FOR DUCTILE IRON PIPE

## SOLUTION OF HIGH INSTALLATION FLEXIBILITY

**Mechanical Coupling**



**Mechanical Flange Adaptor**

**Flange Dismantling Joint**

**Mechanical Coupling**

**Mechanical Flange Adaptor**

**Flange Dismantling Joint**

In Brief

- ▶ For Connecting DI Pipe & Other Rigid Pipe Material with Similar OD
- ▶ Ideal for Quick & Easy Pipeline Repair, Maintenances & System Servicing
- ▶ Working Pressure : PN16
- ▶ Coating : Fusion Bonded Epoxy
- ▶ Sealing : EPDM
- ▶ Angular Deflection :  $\pm 3^\circ$
- ▶ Longitudinal Adjustment : Up to 50mm/2"
- ▶ For Longitudinal Adjustment With Telescoping Action of Flanged Spigot

Standards

- ▶ Design : SPESIFIKASI JKR 20200-0048-99
- ▶ Test : EN 12266-1
- ▶ Flange : EN 1092-2
- ▶ For Ductile Iron Pipe : BS EN 545 / BS EN 598 / ISO 2531 / MS 1919 / DIN 28601
- ▶ For Mild Steel Pipe (  $\leq$  DN300 ) : BS 534 / SPAN TS 21827 / AS 1579

Features

- ▶ Range of Coupling Sizes : DN80 to DN800
- ▶ Range of Coupling Sizes : DN100 to DN150
- ▶ Wedge Gasket Type Allowing OD Tolerance ( +1-3 )mm for Water Sealing
- ▶ Allowing Length Locking with Tie Bars Supplied
- ▶ For Limited Ground Movement, Expansion, Contraction and Minor Angular Misalignment of Pipeline



**LYE MANUFACTURING SDN.BHD.** (197701001852 (32836-H))  
 Manufacturer of Valves, Hydrants, Joints, Fittings & Manhole Covers

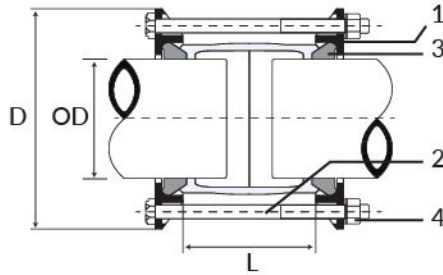


# MECHANICAL JOINTS FOR DUCTILE IRON PIPE

## SOLUTION OF HIGH INSTALLATION FLEXIBILITY

### Technical Table

## Mechanical Coupling



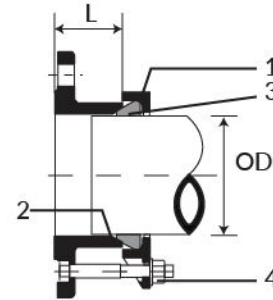
### Assembly Chart

No.	Component	Material	Standard Ref.
1	Gland Flange	Ductile Iron	BS EN 1563
2	Sleeve/Collar	Ductile Iron	BS EN 1563
3	Gasket	EPDM	BS EN 681
4	Bolt & Nut	Hot Dipped Galvanized	BS EN 4190

### Specifications & Parameters Chart

DN (mm)	OD (mm)	D (mm)	L (mm)	Bolts
80	98	188	100	M12x4
100	118	212	100	M12x4
150	170	267	100	M12x4
200	222	322	100	M12x4
250	274	375	100	M12x6
300	326	426	100	M12x6
350	378	498	150	M16x8
400	429	553	150	M16x8
450	480	603	150	M16x10
500	532	658	150	M16x10
600	635	763	150	M16x10
700	738	878	150	M16x12
800	842	988	150	M16x12

## Mechanical Flange Adaptor



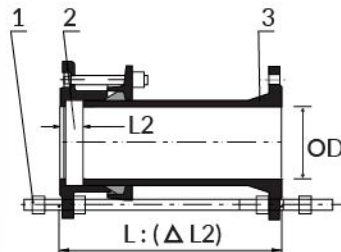
### Assembly Chart

No.	Component	Material	Standard Ref.
1	Gland Flange	Ductile Iron	BS EN 1563
2	Body	Ductile Iron	BS EN 1563
3	Gasket	EPDM	BS EN 681
4	Bolt & Nut	Hot Dipped Galvanized	BS EN 4190

### Specifications & Parameters Chart

DN (mm)	OD (mm)	L (mm)	Bolts	Flange Standard
80	98	70	M12x4	PN10+PN16+BS10/E+ANSI/150
100	118	70	M12x4	PN10+PN16+BS10/E+ANSI/150
150	170	75	M12x4	PN10+PN16+BS10/E+ANSI/150
200	222	75	M12x4	PN10+PN16+BS10/E+ANSI/150
250	274	90	M16x6	PN10+PN16+BS10/E+ANSI/150
300	326	90	M16x6	PN10+PN16+BS10/E+ANSI/150
350	378	100	M16x8	PN10/PN16
400	429	100	M16x8	PN10/PN16
450	480	100	M16x10	PN10/PN16
500	532	100	M16x10	PN10/PN16
600	635	100	M16x10	PN10/PN16
700	738	100	M16x12	PN10/PN16
800	842	100	M16x12	PN10/PN16

## Flange Dismantling Joint



**For Fast & Simple Axial Movement of Water Metering System**

### Assembly Chart

No.	Component	Material	Standard Ref.
1	Tie Rod Bar	Galvanized Steel	BS EN 4190
2	Mech. Flange Adaptor	Ductile Iron	BS EN 1563
3	Flanged Spigot	Ductile Iron	BS EN 1563

### Specifications & Parameters Chart

DN (mm)	OD (mm)	L (mm)	L2 (mm)
100	118	300	50
150	170	450	50

Note: Technical data provided in this brochure is indicative only and may be subject to change without prior notice.