

SLUICE VALVES (GATE VALVES)



1 Resilient Seated

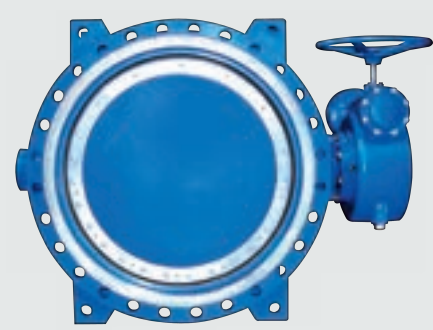


2 Metal Seated



3 Resilient Seated For Actuation

BUTTERFLY VALVES



4 Double Eccentric Flanged



5 Concentric Flanged



6 Concentric Wafer Type

CHECK VALVES



7 Rubber Flap Type (Non-Slam)



8 Double Door Wafer Type



9 Globe Silent Type

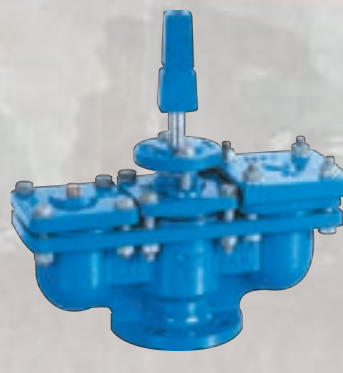
AIR VALVES



10 Single Small Orifice



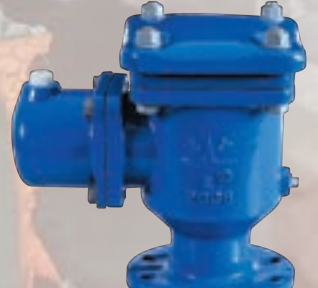
11 Single Large Orifice



12 Double Orifice Standard



13 Double Orifice Kinetic



14 "Aerokinetic" Double Orifice



15 Automatic Air Relief

STRAINERS



16 T-Pot Strainer



17 Y-Strainer



18 Rose Strainer

DETACHABLE JOINTS



19 Detachable Joint (DJ) For UPVC Pipe



20 Detachable Joint (DJ) Long Collar For AC Pipe



21 Variable Adaptor (VA) For AC-UPVC Pipe

FLEXIBLE JOINTS



22 Mechanical Coupling For DI Pipe



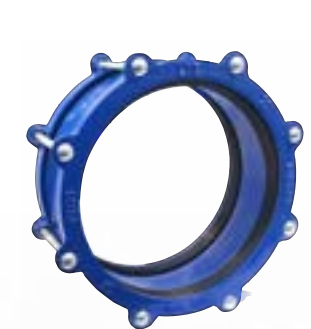
23 Mechanical Flange Adaptor For DI Pipe



24 Stepped Coupling (PD) For PVCO-MS Pipe



25 Stepped Coupling (PA) For PVCO-AC Pipe



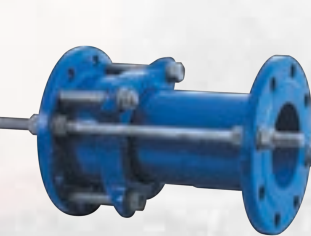
26 Universal Coupling



27 Universal Flange Adaptor



28 Long Collar Mechanical Coupling (PE)



29 Dismantling Joint

JOINT RESTRAINT SOLUTIONS



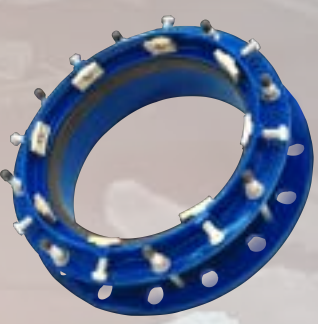
30 Poly Restraint Coupling



31 Poly Restraint Flange Adaptor



32 Large Diameter Poly Restraint Coupling



33 Large Diameter Poly Restraint Flange Adaptor



34 PE Quick Flange Adaptor



35 Uni-Flange Adaptor For DI & MS Pipes

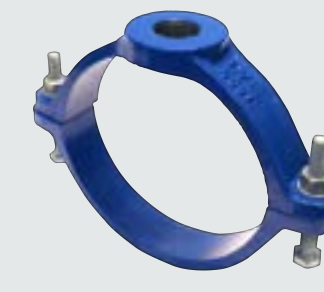


36 Push-on Joint Restraint Harness For DI Pipe

BULK METER SYSTEM



CLAMPS & SADDLES



38 Direct Drill & Tap, Narrow Body Saddle For AC, MS & DI Pipes



39 Direct Drill & Tap, Broad Body Saddle For UPVC Pipe



40 Direct Drill & Tap, Broad Body Saddle For PE, PVC-O & PVC-M Pipes



41 Stainless Steel Single Band Repair Clamp



42 Stainless Steel Double Band Repair Clamp

MANHOLE COVERS & VALVE CHAMBER



50 Manhole Cover 710mm X 710mm X 100mm(H)



51 Manhole Cover With Frame & Extension Ring 710mm X 710mm X 100mm(H)



52 Manhole Cover 840mm X 840mm X 100mm(H)



53 Valve Chamber: 3 Sections

FIRE HYDRANTS



43 2-Way Pillar Hydrant



44 Pillar Hydrant Complete With Landing Valves



45 3-Way Pillar Hydrant



46 Underground Hydrant



47 Sluice Valve Hydrant



48 Landing Valve Flanged End



49 Landing Valve Screwed End



LYE MANUFACTURING SDN.BHD.
(197701001852 (32836-H))

Lot 1844, Jalan KPB 8, Kampung Baru Balakong,
43300 Kajang, Selangor Darul Ehsan, Malaysia.

FACTORY TEL. : 603 - 8961 1623
FAX : 603 - 8961 1092
SALES TEL. : 603 - 6140 3131 (Hunting Line)
FAX : 603 - 6140 5858
EMAIL : enquiry@lye.com.my
WEBSITE : https://lye.com.my/

